

**SPECIFICATION FOR PEC 1000 SERIES PUMPS AND DISPENSERS**

**CEEPEC FEATURES**

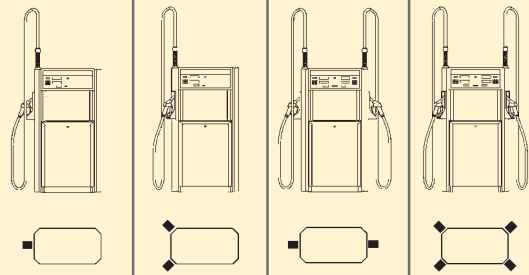
- Tatsuno meters, proven accuracy and calibration stability
- Distinctive head design, providing excellent illumination of displays and housing core controls in one central housing
- PEC Easy Reach hose suspension with excellent hose reach
- ZVA Nozzles with grade colour coding on nozzle and splash guard
- Preset for automatic delivery in whole dollar increments (max \$999)
- Large, unobscured panels for clear corporate branding
- Nozzle boots anti-kink sleeves and splash guards as standard
- Communication protocol - Talks PEC & Australian 2 wire Gilbarco protocols

**OPTIONS**

- Dispenser option for use with submersible pumps
- Easily serviced spin-on type filters for cleaner fuel with dispensers
- ZVA 'Drip-Stop' nozzles on diesel hoses
- Dry break couplings in delivery hoses
- High Speed option – 25 mm hose and nozzle (available on singles and duals only).
- All way nozzle swivels for ease of use
- Diesel latches on Diesel nozzle holsters to prevent mis-fueling

**MODELS**

Type	1 product, 1 hose Single	1 product, 2 Hoses Duo	2 products, 2 Hoses Dual	2 products, 4 Hoses MHD	Flow Rate
PUMPS	1101P	1201P	1201DP	1401P	40 lpm Petrol
			1202DP	1402P	40 lpm Petrol/Diesel
	1102P	1202P	1203DP	1403P	40 lpm Diesel
	1124P		1226DP		75 lpm Diesel
DISPENSERS			1215DP		40/75 lpm Diesel
	1151P	1251P	1251DP	1451P	40 lpm Petrol or Diesel
	1161P		1261DP		75 lpm Diesel
				1241DP	40/75 lpm Diesel



**HYDRAULICS**

Single, Duo, Dual or Quad Hydraulic configurations  
All meters, valves and motors or submersible controlled from on-board AC Control system.

Delivery speed	Single Hose	40 lpm
	Both Hoses – Duo or Quad	35 lpm
	Hi Speed	75 lpm
Suction Head	Pumps Only	4.0 m (Petrol @ 250C @ sea-level)
Metering	Tatsuno MP-02515-G Flowmeter	Better than 0.05%
Air Separation	Tatsuno PGS-0257-L Pumping Unit	Better than 99.95%

**ELECTRONICS**

PEC Intrinsically safe electronics system – ex 1025  
Unsafe components housed in ExD Junction boxes – ex 969-1

Displays	Transflective, backlit LCDs	
Pump Comms	PEC	Two wire current loop – 12vparallel
	Gilbarco	Two wire current loop – 40v

**ELECTRICAL SYSTEMS**

Motor	750 w	750 w Exd and IEC certified motor
Solenoid Valves	Asco PVG 29221	230 vac, Exd two stage solenoid valve

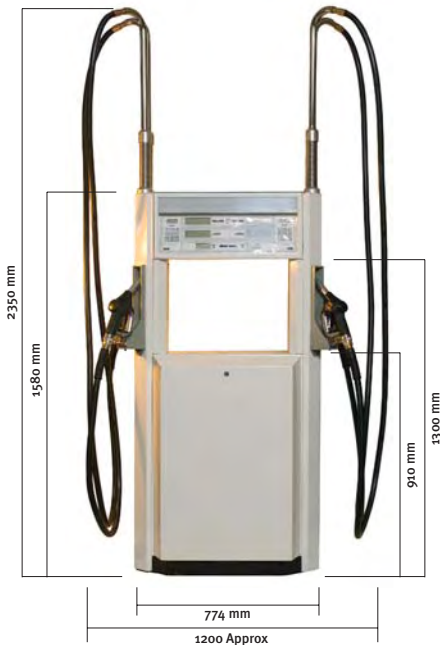
**MECHANICAL SYSTEMS**

Hose	Goodyear	16 mm AS 2683 compliant
Nozzle	ZVA 4/4	ZVA 20 mm Automatic Nozzle
Hose Suspension	PEC Easy Reach	Integrated high rise, provides 4.0m total reach. Easy Reach Spring provides 0.75m extra hose reach

**CEEPEC**



480 mm  
700 Approx



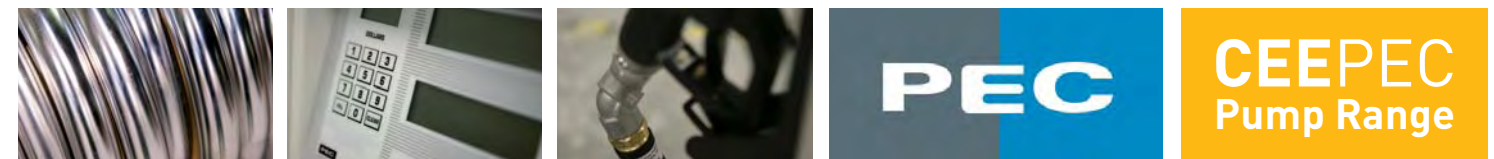
2350 mm  
1580 mm  
910 mm  
1300 mm  
774 mm  
1200 Approx

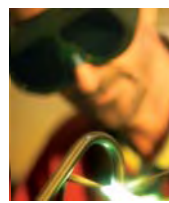


**PEC Fuel Pumps Ltd**  
2 Station Road, PO Box 308  
Marton, New Zealand  
Tel: 64 6 327 6730 Fax: 64 6 327 6724  
www.pec.co.nz email: pecsom@pec.co.nz

**CONTACT:**

**Greg Lilly**  
International Business Development Manager  
Australian Mobile: +61 424 164 814  
NZ Mobile: +64 21 791 878  
Phone: +64 6 327 6730  
Fax: +64 6 327 6724  
Email: gregl@pec.co.nz





## PEC FUEL PUMPS PROFILE

PEC FUEL PUMPS IS A LEADING SUPPLIER OF INNOVATIVE, FUEL DISPENSING PRODUCTS TO THE INTERNATIONAL MARKET. FOUNDED IN 1939, PEC IS BASED IN MARTON, CENTRALLY LOCATED IN THE LOWER NORTH ISLAND OF NEW ZEALAND.

IN 1999, THE GALLAGHER GROUP OF HAMILTON PURCHASED PEC.

TODAY, PEC CONTINUE TO LEAD THE WAY IN APPLYING NEW TECHNOLOGIES TO FUEL MEASUREMENT SYSTEMS, OFFERING FUEL PUMP DESIGNS THAT INCORPORATE THE RELIABILITY OF THE TATSUNO FUEL METERING SYSTEM WITH THE INNOVATION OF CUSTOMISED ELECTRONICS.

THE FLEXIBILITY OF PEC'S MANUFACTURING SYSTEMS HAS ALLOWED GROWTH INTO CONTRACT MANUFACTURING. IN RECENT YEARS PEC HAVE MANUFACTURED HI-

TECH PRODUCTS FOR A WIDE VARIETY OF CUSTOMERS - INCLUDING RETAIL POINT OF SALE, EFTPOS, SECURITY ACCESS CONTROL EQUIPMENT, MOTOR CONTROLLERS AND GPS BASED PRODUCTS.

RECENTLY PEC'S CONTRACT MANUFACTURING FACILITIES HAVE HAD A FURTHER MULTI-MILLION DOLLAR INVESTMENT AND UTILISE A MODERN, COMPUTERISED PRODUCTION SYSTEM BASED ON THE MRP-II MODEL. THE COMPANY IS FULLY CERTIFIED TO THE ISO 9001:2000 STANDARD.

THIS INNOVATION AND DIVERSIFICATION FUTURE PROOFS PEC AND CONTINUES GROWTH PATHS.

## PEC CEEPEC RANGE

Ideal for the requirements of smaller sites, the stylish CEEPEC range of fuel dispensers offer one to four hoses in a compact footprint. A rugged powder-coated body can accommodate up to two fuel grades. Stainless steel chassis, covers and many fittings ensure excellent corrosion resistance. Both pressure fed and suction models are available.

The Head assembly houses all the core electronic controls and features large, well-lit displays, each with its own preset keypad. The same control circuitry used in the PEC MULTIPEC series ensures reliability and low cost of ownership. Flexibility is a cornerstone of the CEEPEC range. Options can be mixed and matched. For example, a diesel dual with one high speed, 25-mm hose and one standard flow, 16-mm hose can be configured allowing high speed fueling of trucks along with easier hose handling for smaller passenger vehicles.

The CEEPEC range uses the PEC Easy Reach hose suspension system to maximise hose reach.

Nozzles are stowed at a comfortable height and on some models are set on a 45° angle to optimise hose lay.



# CEEPEC



KEY BENEFITS
<i>High Accuracy</i>
<ul style="list-style-type: none"> <li>• Low product give-away through the use of Tatsuno meters.</li> <li>• Tatsuno meters have a deserved reputation for reliability, accuracy and calibration stability. To back this up, PEC offer a 3-year replacement guarantee.</li> </ul>
<i>Low cost of ownership</i>
<ul style="list-style-type: none"> <li>• Reliable PEC electronic systems, providing control, display and communication functions.</li> <li>• PEC electronics have a strong reputation for reliability and low-cost repair as a result of simple system architecture, sound design and quality manufacturing</li> <li>• Durable powdercoated panels for long life. No claims have ever been lodged against PEC's 5-year corrosion guarantee.</li> </ul>